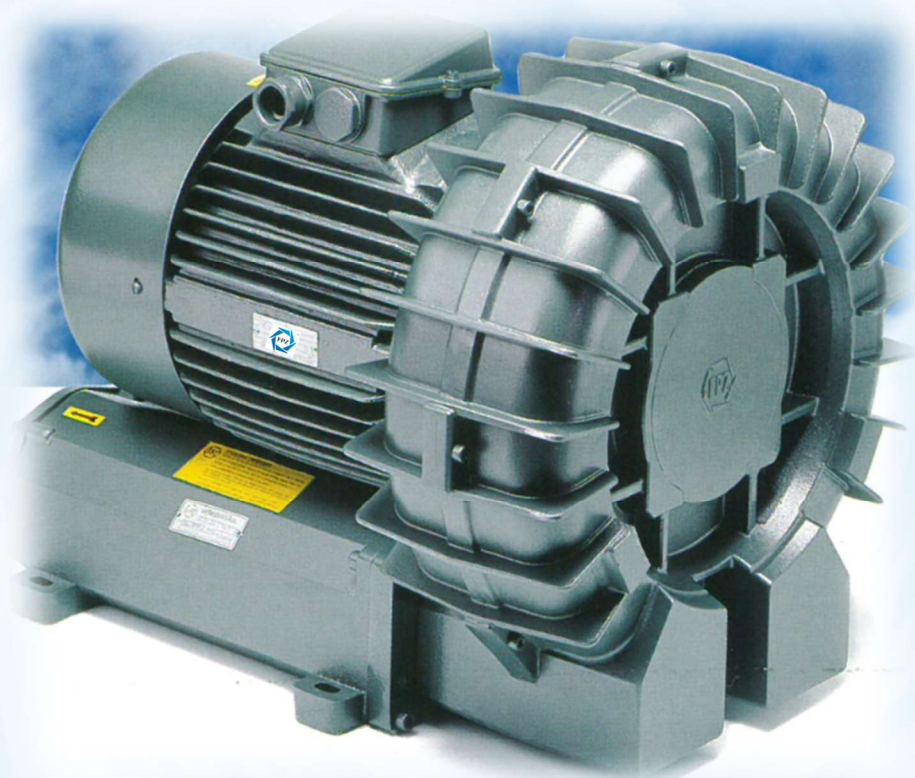




ASPIRATORI COMPRESSORI A CANALE LATERALE

SIDE CHANNEL BLOWERS



MVF S.r.l.
Via San Giovanni Bosco 12 15121 Alessandria Italy
Tel +39 0131 68.730 Website: www.mvf.it E-mail: info@mvf.it

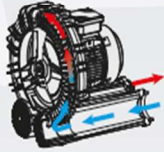
ASPIRATORI / COMPRESSORI A CANALE LATERALE

SIDE CHANNEL BLOWERS

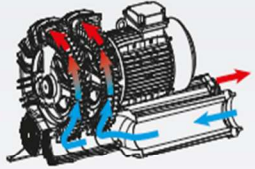


Performance 60 Hz - in aspirazione in vacuum

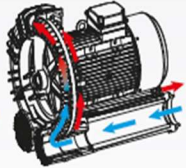
MS
Singola girante monostadio



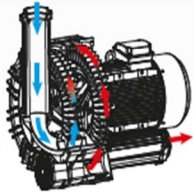
TS
Doppia girante monostadio



MD
Singola girante doppio stadio



TD
Doppia girante doppio stadio

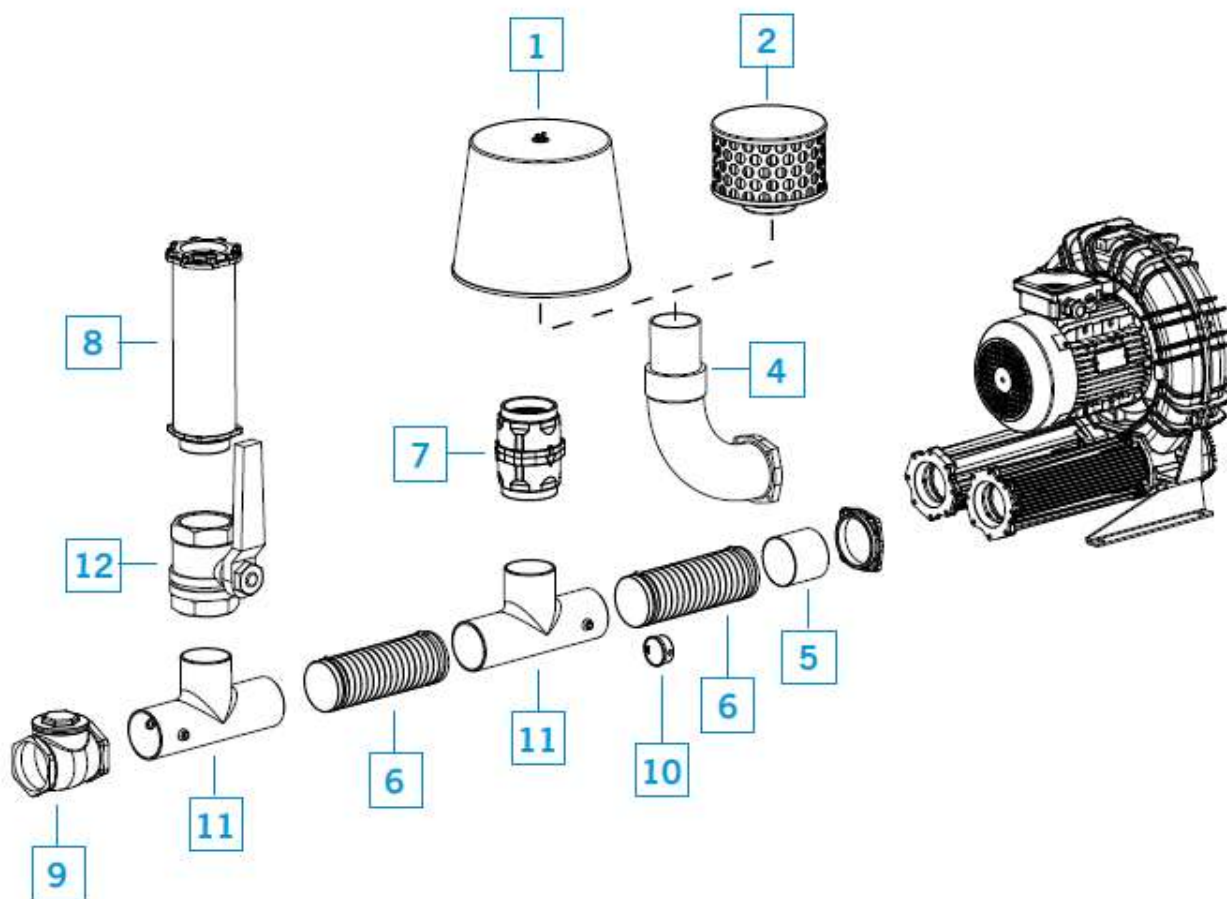


Tipo	Portata Dimensione del motore installato																				Δp max	Q @ Δp max	P @ Δp max
	Portata massima		- 50 hPa (mbar)		- 100 hPa (mbar)		- 150 hPa (mbar)		- 200 hPa (mbar)		- 250 hPa (mbar)		- 300 hPa (mbar)		- 350 hPa (mbar)		-400 hPa (mbar)		- 450 hPa (mbar)				
	m3/h	kW	m3/h	kW	m3/h	kW	m3/h	kW	m3/h	kW	m3/h	kW	m3/h	kW	m3/h	kW	m3/h	kW	m3/h	kW			
06R MS	66.0	0.23	43.6	0.23	15.7	0.40														-120.0	0	0.40	
K03 MS	89.0	0.42	74.3	0.42	57.4	0.42	38.3	0.65												-175.0	28.0	0.65	
K04 MS	166.0	0.90	148.6	0.90	128.6	0.90	106.2	1.30	81.4	1.70	54.0	1.70								-250.0	54.0	1.70	
K05 MS	265.0	1.30	242.4	1.30	216.5	1.30	187.3	1.70	154.9	2.60	119.2	2.60								-260.0	111.6	2.60	
K06 MS	366.0	2.60	340.7	2.60	311.2	2.60	277.6	3.50	239.8	3.50	197.9	4.80								-275.0	175.3	4.80	
K07 MS	499.0	2.60	465.4	2.60	426.9	3.50	383.5	3.50	335.3	4.80	282.3	4.80								-250.0	282.3	4.80	
K75 MS	576.0	4.80	536.4	4.80	491.3	4.80	440.8	4.80	384.9	6.50										-200.0	384.9	6.50	
K08 MS	647.0	3.50	611.7	3.50	570.3	4.80	522.7	4.80	468.9	6.50	409.0	9.00	342.9	9.00						-325.0	307.5	9.00	
K09 MS	800.0	4.80	760.5	4.80	715.4	6.50	664.6	6.50	608.1	9.00	546.0	9.00								-250.0	546.0	9.00	
K10 MS	944.0	6.50	904.2	6.50	857.3	6.50	803.4	9.00	742.5	9.00	674.5	11.00	599.4	13.00						-325.0	559.3	13.00	
e11 MS	1140	7.50	1088	7.50	1042	7.50	990	9.20	931	11.00	867	15.00	797	15.00	720	15.00				-350.0	720.0	15.00	
K12 MS	1234.0	11.00	1189.3	11.00	1136.7	11.00	1076.3	13.00	1008.1	17.00	932.0	17.00	848.1	22.00						-325.0	803.2	22.00	
K05 TS	493.0	3.50	450.5	3.50	402.3	3.50	348.4	4.80	288.7	4.80										-210.0	276.1	4.80	
K06 TS	679.0	4.80	632.0	4.80	578.1	4.80	517.3	6.50	449.5	9.00	374.9	9.00								-250.0	374.9	9.00	
K07 TS	998.0	6.50	930.8	6.50	853.6	6.50	766.6	9.00	669.6	9.00	562.7	11.00								-250.0	562.7	11.00	
K08 TS	1214.0	9.00	1148.0	9.00	1072.8	9.00	988.2	11.00	894.4	13.00	791.3	17.00	678.8	17.00						-300.0	678.8	17.00	
K09 TS	1599.0	13.00	1520.3	13.00	1430.0	13.00	1328.2	13.00	1214.9	17.00	1090.1	22.00								-250.0	1090.1	22.00	
K10 TS	1857.0	13.00	1771.7	13.00	1673.8	13.00	1563.2	17.00	1440.1	22.00	1304.4	22.00								-250.0	1304.4	22.00	
e11 TS	2240	15.00	2122	15.00	2009	15.00	1890	18.50	1767	22.00										-200.0	1767.0	22.00	
K12 TS	2382.0	26.00	2289.9	26.00	2176.4	26.00														-140.0	2070.1	26.00	
15DH MD	58.0	0.63	53.2	0.63	47.6	0.63	41.5	0.63	34.4	0.63	26.2	0.63								-275.0	22.1	0.63	
R20 MD	70.0	0.90	62.5	0.90	54.8	0.90	46.9	0.90	38.7	0.90	30.4	0.90	21.8	0.90	13.0	1.30				-350.0	13.0	1.30	
R30 MD	110.0	1.30	100.7	1.30	91.1	1.30	81.3	1.30	71.2	1.30	60.9	1.30	50.4	1.30	39.6	1.70				-375.0	34.2	1.70	
R40 MD	137.0	2.60	128.6	2.60	119.7	2.60	110.1	2.60	99.9	2.60	89.1	2.60	77.6	2.60	65.6	2.60				-375.0	59.3	2.60	
K07R MD	218.0	3.50	211.7	3.50	204.4	3.50	196.1	3.50	186.6	3.50	176.1	3.50	164.6	3.50	152.0	3.50	138.3	3.50	123.6	4.80	-450.0	123.6	4.80
K08R MD	285.0	4.80	277.5	4.80	269.0	4.80	259.7	4.80	249.4	4.80	238.3	4.80	226.2	4.80	213.2	4.80	199.4	4.80	184.6	6.50	-450.0	184.6	6.50
K09 MD	374.0	6.50	366.2	6.50	356.6	6.50	345.2	6.50	332.1	6.50	317.2	6.50	300.5	6.50	282.0	6.50	261.8	6.50		-425.0	251.0	6.50	
K10 MD	466.0	9.00	454.0	9.00	440.6	9.00	425.6	9.00	409.0	9.00	391.0	9.00	371.4	9.00	350.3	9.00	327.7	9.00		-425.0	315.8	9.00	
e11 MD	553	7.50	538	7.50	522	7.50	504	7.50	485	7.50	464	7.50	441	9.20	417	9.20	392	9.20		-400.0	392.0	9.20	
K12 MD	570.0	13.00	562.1	13.00	551.1	13.00	537.0	13.00	520.0	13.00	499.8	13.00	476.7	13.00	450.4	13.00	421.2	13.00		-425.0	405.4	13.00	
K05 TD	259.0	3.50	249.5	3.50	237.9	3.50	224.1	3.50	208.2	3.50	190.1	3.50	169.9	3.50	147.6	4.80	123.0	4.80		-400.0	123.0	4.80	
K06 TD	376.0	4.80	365.3	4.80	352.3	4.80	336.8	4.80	319.0	4.80	298.7	6.50	276.1	6.50	251.1	6.50	223.7	9.00		-400.0	223.7	9.00	
K07 TD	502.0	6.50	487.9	6.50	470.4	6.50	449.6	6.50	425.4	6.50	397.8	6.50	366.9	6.50	332.6	9.00	295.0	9.00		-400.0	287.0	9.00	
K08 TD	625.0	9.00	612.0	9.00	595.8	9.00	576.3	9.00	553.7	9.00	527.8	9.00	498.8	9.00	466.5	11.00	431.0	11.00		-425.0	412.0	11.00	
K09 TD	793.0	13.00	779.8	13.00	762.5	13.00	741.1	13.00	715.6	13.00	686.0	13.00	652.2	13.00	614.4	17.00	572.4	17.00	526.3	17.00	-475.0	501.7	17.00
K10 TD	970.0	13.00	953.7	13.00	932.9	13.00	907.7	13.00	878.1	13.00	844.1	13.00	805.7	17.00	762.9	17.00	715.6	22.00	664.0	22.00	-450.0	664.0	22.00
e11 TD	1169	15.00	1139	15.00	1113	15.00	1086	15.00	1058	15.00	1028	15.00	996	15.00	964	18.50	929	18.50		-400.0	929.0	18.50	
K12 TD	1216.0	22.00	1199.2	22.00	1178.4	22.00	1153.6	22.00	1124.7	22.00	1091.9	26.00	1055.1	26.00	1014.2	26.00				-350.0	1014.2	26.00	

ASPIRATORI / COMPRESSORI A CANALE LATERALE

SIDE CHANNEL BLOWERS

ACCESSORIES FOR COMPRESSION - ACCESSORI IN COMPRESSIONE

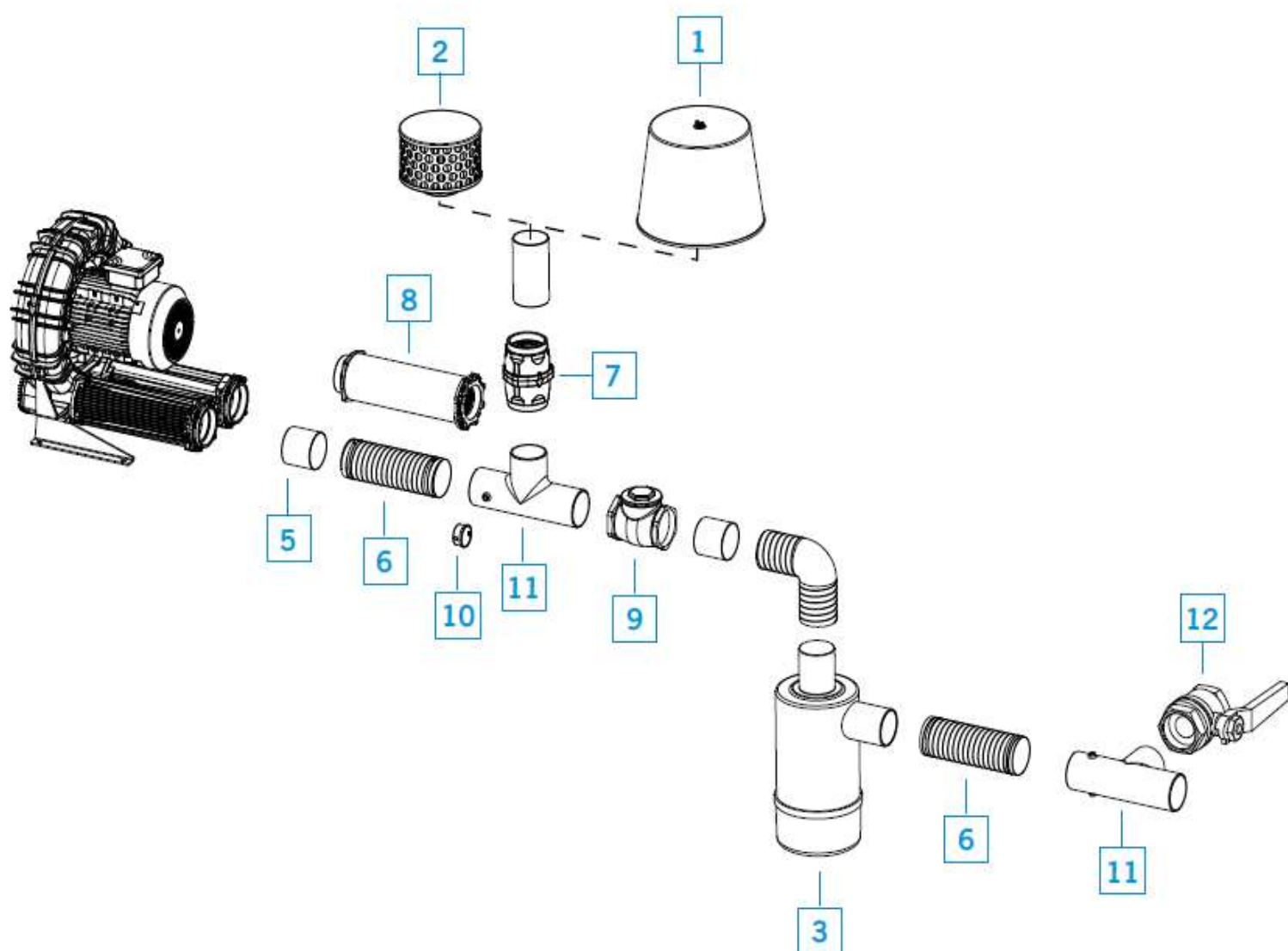


- 1 Cartridge filter - Filtro a cartuccia - Filtro Cartucho
- 2 Indoor intake filter - Filtro di aspirazione per interni - Filtro de aspiración para el interior
- 3 Cyclone filter - Filtro a ciclone - Filtro "ciclón"/ Inline filter - Filtro in linea - Filtro en línea
- 4 Filter manifold - Collettore per filtri - Colector
- 5 Hose sleeve - Manicotto portagomma - Bridas de unión
- 6 Flexible hose - Manicotto flessibile - Manguito flexible

ASPIRATORI / COMPRESSORI A CANALE LATERALE

SIDE CHANNEL BLOWERS

ACCESSORIES FOR VACUUM - ACCESSORI IN ASPIRAZIONE



7 Vacuum/pressure relief valve - Valvola limitatrice vuoto/pressione - Válvula limitadora de vacío/presión

8 Additional silencer - Silenziatore supplementare - Silenciador adicional

9 Non return - Valvola di non ritorno - Válvula de retención

10 Pressure / Vacuum gauge - Manometro / Vuotometro - Manómetro / Vacuómetro

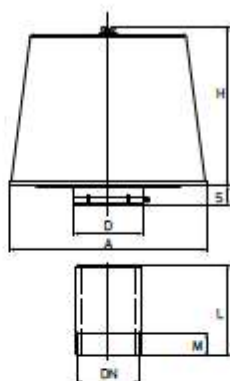
11 Relief valve/gauge holder - Portavalvola VRL - Porta Válvulas VRL

12 Isolation valve - Valvola a sfera - Válvula de bola

ASPIRATORI / COMPRESSORI A CANALE LATERALE

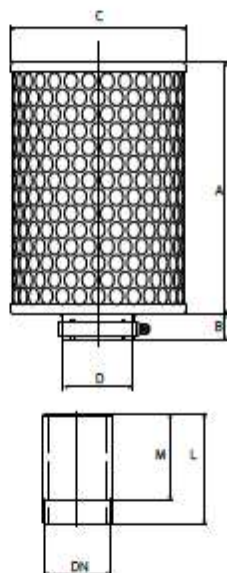
SIDE CHANNEL BLOWERS

Cartridge filter - Filtro a cartuccia - Filtro Cartucho



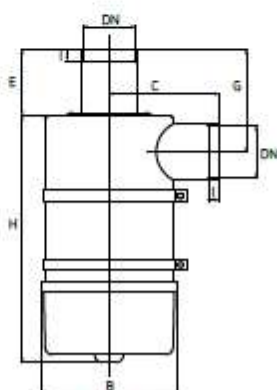
Type Tipo Tipo	DN	A	D	H	S	L	M
FL 1	G 1/2"	75	21	62	23	100	15
FL 2	G 3/4"	150	27	105	23	130	15
FL 3	G 1"	150	33	105	23	130	15
FL 4	G 1" 1/4	150	42	105	23	200	15
FL 5	G 1" 1/2	180	48	155	23	200	15
FL 6	G 2"	230	60	155	23	200	15
FL 8	G 3"	280	89	180	35	200	15
FL 9	G 4"	410	114	330	35	200	15
FL 10	G 5"	410	140	330	35	200	35

Indoor intake filter - Filtro di aspirazione per interni - Filtro de aspiración para el interior



Type Tipo Tipo	DN	A	B	C	D	L	M
FA 4	1" 1/4	126	23	126	42	200	15
FA 5	1" 1/2	217	23	152	48	200	15
FA 6	2"	217	23	152	60	200	15
FA 8	3"	150	34	200	89	200	15
FA 9	4"	160	38	257	114	200	15
FA 10	5"	160	38	257	140	200	35

Cyclone filter - Filtro a ciclone - Filtro "ciclón"



Type Tipo Tipo	DN	B	C	E	G	H	I
FC 5	G 1" 1/2	146	126	81	129	312	22
FC 6	G 2"	178	156	91	144	341	22
FC 8	G 3"	220	157	102	172	453	22
FC 9	G 4"	276	225	128	208	493	22

ASPIRATORI / COMPRESSORI A CANALE LATERALE

SIDE CHANNEL BLOWERS

Inline filter - Filtro in linea - Filtro en línea



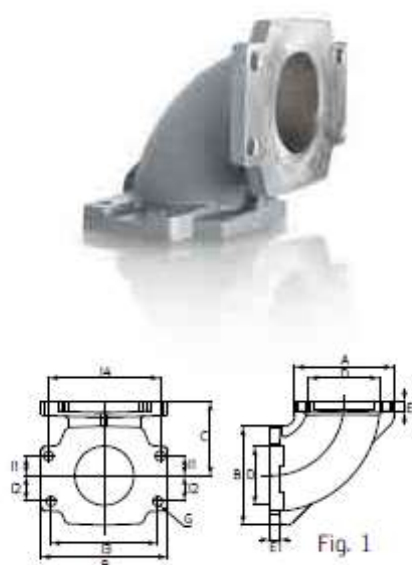
Type Tipo Tipo	Di	De	A	B	C	E
FV 5	G 1" 1/2	-	200	176	100	112
FV 6	G 2"	-	258	200	111	131
FV 8	G 3"	-	268	200	122	142
FV 10	-	G 5"	730	470	265	495

Filter manifold - Collettore per filtri - Colector



Type Tipo Tipo	DN	A	B	D	S	I	R	α	Fig
CA 4	1" 1/4	220	90	42	15	75	7	30°	1
CA 4V	1" 1/4	220	90	42	15	64	7	-	2
CA 4K	1" 1/4	260	160	42	15	64	7	-	2
CA 5	1" 1/2	260	110	48	15	85	7	45°	1
CA 5V	1" 1/2	260	110	48	15	75	7	-	2
CA 5K	1" 1/2	300	180	48	15	75	7	-	2
CA 6	2"	320	135	60	15	85	7	45°	1
CA 6V	2"	320	135	60	15	85	7	-	2
CA 8	3"	380	185	88	15	120	7	-	3
CA 9	4"	400	235	113	20	150	9	-	3
CA 10	5"	450	300	140	20	210	18	-	3

CK Manifold - Collettore CK - Colector CK



Type Tipo Tipo	A	B	C	D	E	E1	F	G	I	I1	I2	I3	I4	Fig
CK 4	69	84.6	56	38	7	11,5	7	M6	-	14,5	14,5	70,2	70,2	1
CK 5	80	100	56	43	7	11,5	7	M6	-	17,6	17,6	85	85	
CK 6	92	118	69	55	8,5	13	9	M8	-	18,3	23,8	99,4	104	
CK 8	Ø145	Ø145	109,5	75	10,5	-	9	M8	130	-	-	-	-	2
CK 9	Ø165	Ø165	132,5	90	10,5	-	9	M8	150	-	-	-	-	
CK 10	Ø220	Ø220	192	128	10,5	-	9	M8	190	-	-	-	-	

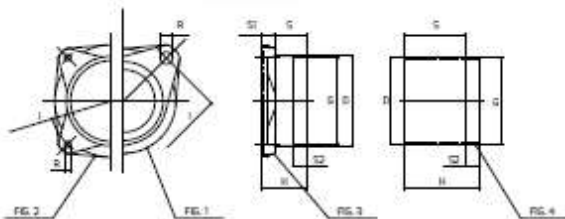
ASPIRATORI / COMPRESSORI A CANALE LATERALE

SIDE CHANNEL BLOWERS

Hose sleeve - Manicotto portagomma - Bridas de unión



Type Tipo Tipo	DN	D	G	H	I	R	S	S1	S2	Fig
MP 1	1/2"	21	G 1/2"	100	-	-	85	-	15	3
MP 2	3/4"	27	G 3/4"	100	-	-	85	-	15	3
MP 3	1"	33	-	35	55	6,5	25	-	-	1
MP 4	1" 1/4	42	-	35	75	6,5	25	-	-	1
MP 4V	1" 1/4	42	-	35	64	6,5	25	-	-	1
MP 5	1" 1/2	48	-	35	85	6,5	25	-	-	1
MP 5V	1" 1/2	48	-	35	75	6,5	25	-	-	1
MP 6	2"	60	-	35	85	6,5	25	-	-	1
MP 8	3"	88	-	45	120	6,5	32	-	-	2
MP 9	4"	114	G 4"	100	-	-	80	-	20	3
MP 10	5"	140	-	60	210	17	-	8	-	4
MP 10G	5"	140	G 5"	60	210	17	30	8	30	4
MP 10N	5"	140	G 5"NPT	60	210	17	30	8	30	4



Flange connector for VRL valves and flanged hose connector - Flangie portavalvole VRL e portagomma
- Bidas porta válvulas VRL y portagoma



Type Tipo Tipo	DN	D	H	I	R	S	S1	S2	Fig.
VK 5	1" 1/2	G 1" 1/2	30	92	6,5	10	-	10	1
VK 6	2"	G 2"	50	110	8,5	10	-	12	1
VK 6A	2"	G 2"	59,5	130	9	11	-	12	2
VK 8	3"	G 3"	43	130	9	11	-	10	2
VK 9	4"	G 4"	46	150	9	11	-	12	2
PK 5	1" 1/2	∅ 48	30	92	6,5	10	20	-	1
PK 6	2"	∅ 60	50	110	8,5	10	35	-	1
PK 6A	2"	∅ 60	59,5	130	9	11	35	-	1
PK 8	3"	∅ 88	43	130	9	11	24	-	1
PK 9	4"	∅ 113	46	150	9	11	27	-	1

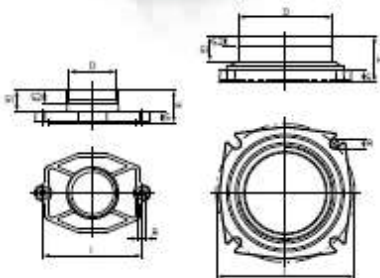


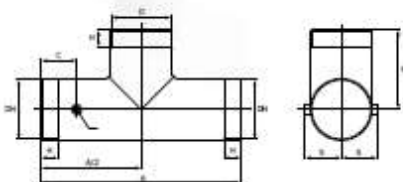
Fig. 1

Fig.2

Relief valve/gauge holder - Porta valvola/manometro - Porta válvula / manómetro



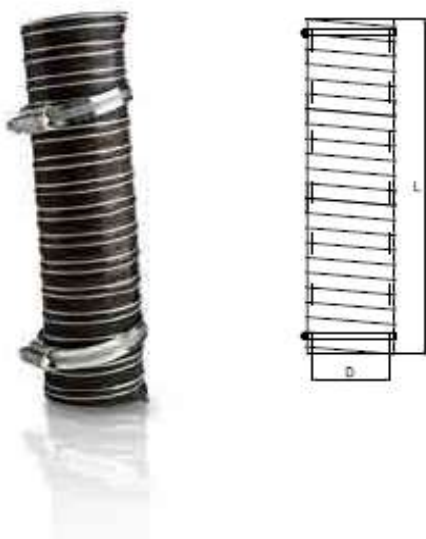
Type Tipo Tipo	DN	D	A	B	C	G	H	S
PV 66	G 2"	G 2"	227	95	35	G 1/4"	21.5	40
PV 86	G 3"	G 2"	312	137	55	G 1/4"	28	54
PV 88	G 3"	G 3"	310	130	55	G 1/4"	28.0	54
PV 96	G 4"	G 2"	371	150	65	G 1/4"	31.5	67
PV 98	G 4"	G 3"	370	173	65	G 1/4"	31.5	67
PV 99	G 4"	G 4"	370	147	65	G 1/4"	31.5	67
PV 109	G 5"	G 4"	370	175	65	G 1/4"	31.5	80



ASPIRATORI / COMPRESSORI A CANALE LATERALE

SIDE CHANNEL BLOWERS

Flexible hose - Manicotto flessibile - Manguito flexible



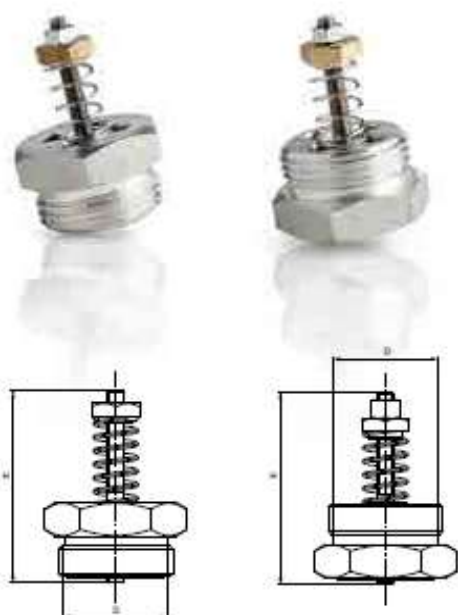
Type Tipo Tipo	DN	D	L
MF 1	1/2"	20	200
MF 2	3/4"	26	200
MF 3	1"	32	200
MF 4	1" 1/4	45	200
MF 5	1" 1/2	50	250
MF 6	2"	64	250
MF 8	3"	89	330
MF 9	4"	114	330
MF 10	5"	140	330

Vacuum/pressure relief valve - Valvola limitatrice vuoto/pressione - Válvula limitadora de vacío/presión



Type Tipo Tipo	DN	A	B	H
VRL 6	G 2"	102	175	12
VRL 6 HP	G 2"	102	175	12
VRL 8	G 3"	135	190	15
VRL 8 HP	G 3"	135	190	15
VRL 9	G 4"	160	206	18

Vacuum/pressure relief valve - Valvola limitatrice vuoto/pressione - Válvula limitadora de vacío/presión

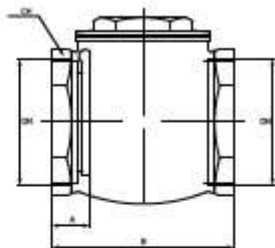


Type Tipo Tipo	H	D
RV 3	57	1" G
VLA 3	57	1" G

ASPIRATORI / COMPRESSORI A CANALE LATERALE

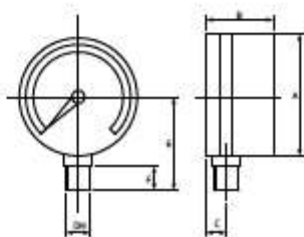
SIDE CHANNEL BLOWERS

Non return valve - Valvola di non ritorno - Válvula de retención



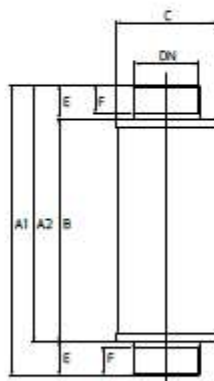
Type Tipo Tipo	Di	A	B	CH
VC 1	G 1/2"	8	47	25
VC 2	G 3/4"	8	52	32
VC 3	G 1"	10	62	38
VC 4	G 1" 1/4	10	74	47
VC 5	G 1" 1/2	10	86	55
VC 6	G 2"	12	97	67
VC 8	G 3"	12	133	95
VC 9	G 4"	20	180	124

Pressure / Vacuum gauge - Manometro / Vuotometro - Manómetro / Vacuómetro



Type Tipo Tipo	Δp mbar	DN	A	B	C	E	F
MC 010	0-600	G 1/4"	63	36	11	50	13
MC 020	0-1000	G 1/4"	63	36	11	50	13
MV 010	-600-0	G 1/4"	63	36	11	50	13

Additional silencer - Silenziatore supplementare - Silenciador adicional



Type Tipo Tipo	DN	A1	A2	B	C	E	F
SI 4	G 1" 1/4	-	240	140	70	50	15
SI 5	G 1" 1/2	-	230	170	80	30	20
SI 6	G 2"	-	260	200	90	30	20
SI 8	G 3"	-	570	400	152	85	20
SI 9	G 4"	-	485	415	168	27	20
SS 4	G 1" 1/4	190	-	140	70	50	15
SS 5	G 1" 1/2	200	-	170	80	30	20
SS 6	G 2"	230	-	200	90	30	20
SS 8	G 3"	485	-	400	152	85	20
SS 9	G 4"	465	-	430	169	27	20

ASPIRATORI / COMPRESSORI A CANALE LATERALE

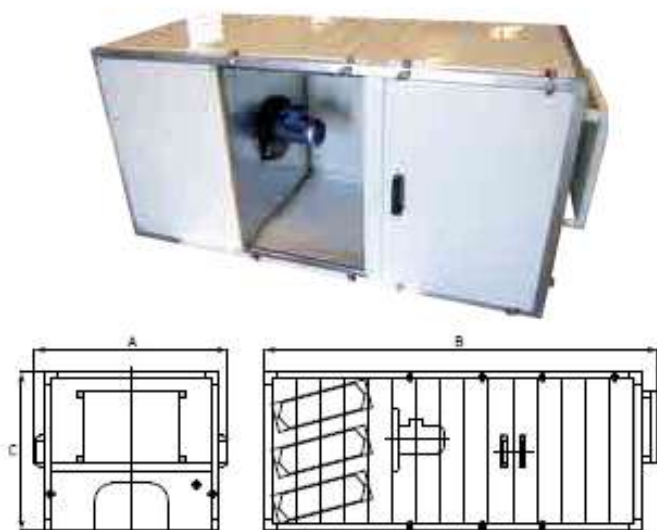
SIDE CHANNEL BLOWERS

Acoustic hood - Cabina afona - Cabina de insonorización



Type Tipo Tipo	A	B	C
IH 1	340	462	400
IH 3	363	500	420
IH 5	430	680	540

Acoustic hood - Cabina afona - Cabina de insonorización



Type Tipo Tipo	A	B	C
IH 7	805	1635	660
IH 7R	805	1635	660
IH 8	805	1635	660
IH 9	805	1635	660
IH 10	805	1705	760
IH 11	805	1705	760
IH 12	805	1705	760
IH 13	805	1705	800